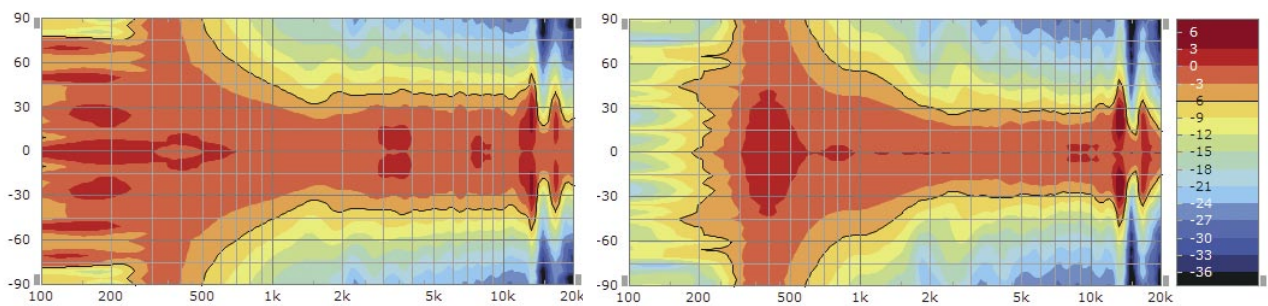
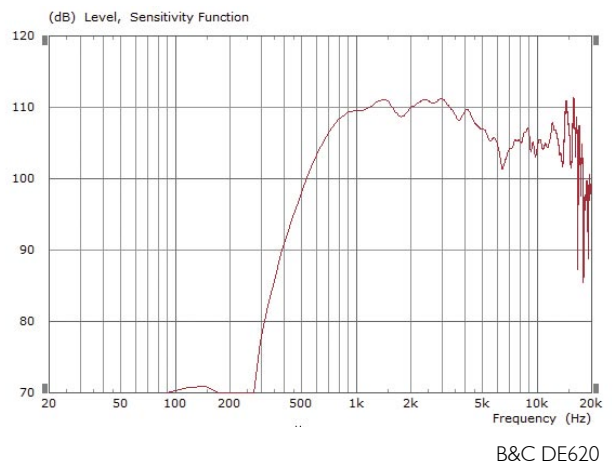
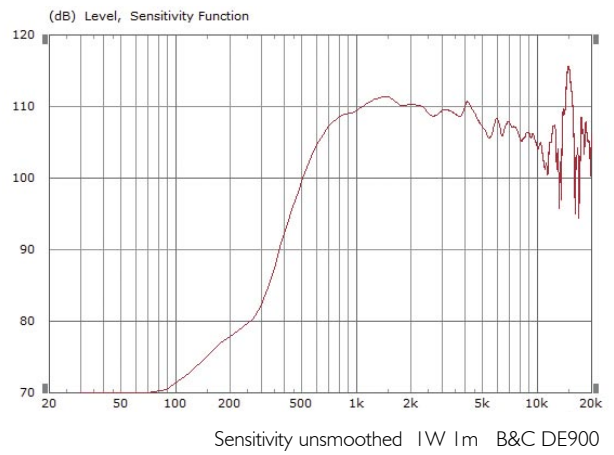


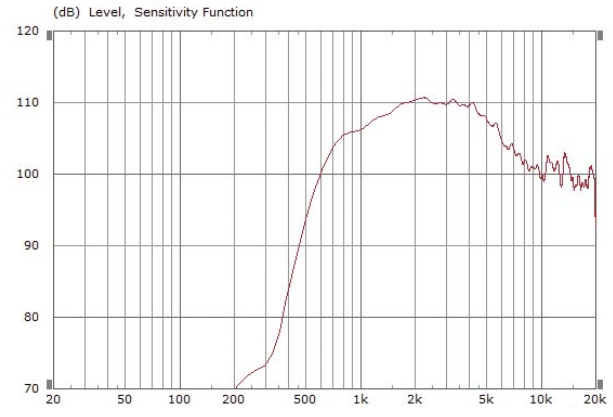
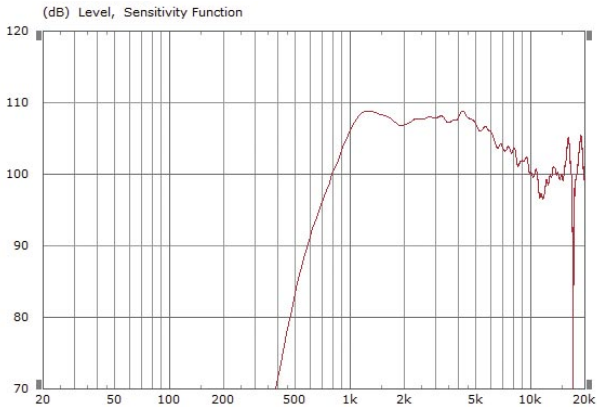
8060

Material:  
b x h x t:

1,4" / 1" 80° x 60°  
GFK  
32 x 22 x 13 cm

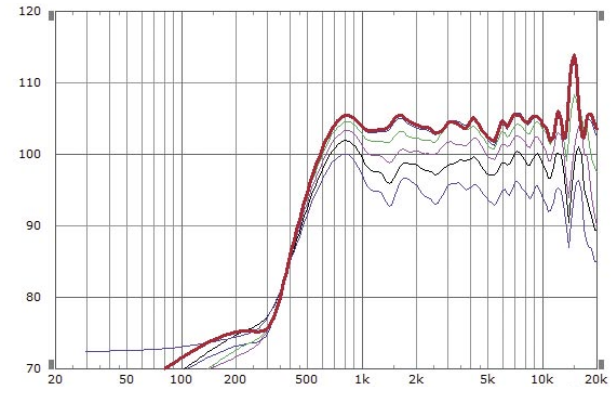
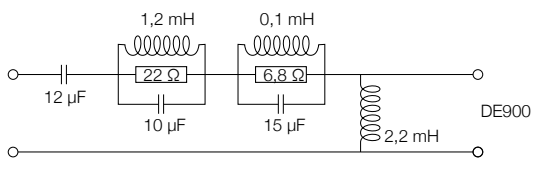


horizontale und vertikale Isobaren 1/10 oct. smooting



B&C DE120 und DE500 über I"-Adapter 1W 1m unsmoothed

DE900 / 8060 über passives Filter  
 0, 10, 20, 30, 40, 50° hor  
 1/10 oct smoothing



DE620 / 8060 über passives Filter  
 0, 10, 20, 30, 40, 50° hor  
 1/10 oct smoothing

